



**EUROPEAN COMMISSION**  
DIRECTORATE-GENERAL FOR AGRICULTURE AND RURAL DEVELOPMENT  
Directorate C. Economics of agricultural markets (and CMO)  
**C.4. Animal products**

# **Report on the Intervention Measures in the Milk Sector 2005**

The figures in this report are based on the information communicated by the Member States and do not necessarily correspond with the payment made by the EAGGF

Brussels, May 2006

## Table of Content

1. DAIRY EXPENDITURE IN BUDGET YEAR 2005.....	3
2. AID LEVELS .....	4
3. BUTTER - TABLES AND GRAPHS.....	6
4. SKIMMED MILK POWDERS - TABLES AND GRAPHS .....	11
5. PRIVATE STORAGE AID CHEESES – QUANTITIES SUBSIDISED.....	16
6. SCHOOL MILK: QUANTITIES SUBSIDISED DURING THE 2004/205 SCHOOL YEAR .....	17

# Report on the intervention measures in the dairy sector 2005

## 1. DAIRY EXPENDITURE IN BUDGET YEAR 2005

Million €	2004	2005*
SMP intervention	- 11,5	-60
SMP disposal	591,4	283
Of which		
Animal feed	239,0	165
Casein	352,4	118
Butter storage	-18,2	-56
Of which		
– Intervention	-40,7	-86
– Private storage	22,5	30
Butter disposal	401,5	283
Of which		
– Pastry	302,9	211
– Ice cream	62,3	41
– Non profit organisations	24,6	22
– Concentrated butter	11,7	8
Private storage Cheese	34,7	31
School milk	67,3	64
Refunds	1.494,9	1.141
Super levy	-490,1	-447
Refunds non annex I	203,9	143
Dairy payments		1370
<b>total</b>	<b>2.296,0</b>	<b>2.755</b>

\*The budget year 2004 runs from 16 October in 2004 until 15 October year 2005.

# Report on the Intervention Measures in 2005

## 2. AID LEVELS

### Aid for Butter products (€/ 100 kg)

Regulation		23/11/04	13/01/05	27/01/05	10/02/05	24/02/05	10/03/05	14/04/05	28/04/05	26/05/05	16/06/05	30/06/05	14/07/05	28/07/05	25/08/05	01/09/05	29/09/05	13/10/05		
2571/97	Traced Products																			
	82 % Butter	Form. A	58	57.0	56.5	56.0	56.0	56.0	51.0	51.0	46.0	46.0	41.0	41.0	41.0	41.0	41.0	39.0	39.0	
		Form. B	58	refused	57.0	-	55.5	55.5	50.0	50.0	-	-	41.0	41.0	-	-	-	-	39.0	
	80 % Butter	Form. A	56	55.1	55.1	54.5	54.5	53.5	44.0	44.0	44.0	44.0	-	39.0	39.0	39.0	39.0	-	37.0	
		Form. B																		
	Concentrated Butter	Form. A	69	68.5	68.0	67.5	67.5	67.5	61.5	61.5	-	55.5	-	49.0	49.0	49.0	49.0	-	46.5	
		Form. B	69	68.0	68.0	67.5	67.0	67.0	61.5	61.5	-	55.5	-	49.0	49.0	49.0	49.0	49.0	-	46.5
	Cream	Form. B	26	26.0	26.0	26.0	26.0	26.0	24.0	24.0	-	22.0	20.0	20.0	20.0	20.0	20.0	-	19.0	
	Untraced Products																			
	82 % Butter	Form. A	54	53.0	53.0	52.0	52.0	52.0	47.0	47.0	42.0	42.0	37.5	37.5	37.0	37.0	37.0	35.0	35.0	
		Form. B	54	53.0	53.0	52.0	52.0	52.0	41.0	41.0	41.0	41.0	-	37.0	37.0	37.0	37.0	-	35.0	
	80 % Butter	Form. A	52	51.8	51.8	50.8	50.8	50.8	45.9	45.9	40.0	40.0	36.1	36.1	36.1	36.1	36.1	-	34.1	
		Form. B	-		51.0		49.8	-	-	45.9	-	40.0	-	36.1	-	36.1	36.1	-	34.0	
	Concentrated Butter	Form. A	65	64.5	64.5	63.5	63.5	63.5	57.5	57.5	-	51.5	-	45.1	45.1	45.1	45.1	-	42.6	
		Form. B	65	refused	64.5	63.5	63.5	63.5	57.5	57.5	-	51.5	-	45.0	45.0	45.0	45.0	45.0	-	42.0
	Cream	Form. B	23	22.0	22.0	22.0	22.0	22.0	20.0	20.0	18.0	18.0	16.0	16.0	16.0	16.0	16.0	15.0	15.0	
429/90			69	67.0	67.0	66.6	66.6	66.6	60.6	60.6	0.0	54.5	0.0	48.0	48.0	48.0	48.0	46.0	45.5	
2191/81			100	100	100	80	80	80	80	80	80	80	80	80	80	80	60	60	60	

**Aid granted for skimmed milk and SMP in 2004 (€/ 100 kg)**

Period	skimmed milk powder for animal feed	period	skimmed milk for casein production
until 30 June from 1 July	€40 €30	until 18 February until 14 May until 30 June From 1 July	€2.70 €1.3 €0.75 €0.52

**Aid granted for private storage of cheese (€/ 100 kg)**

	1999	2002	2003	2004	2005
Grana-Padano	0.64	0.48	0.4	0.32	0.3
Parmigiano-Reggiano	0.89	0.69	0.58	0.52	0.4
Provolone	0.52	0.39	0.32	0.26	0.25
Emmental	0.5	0.36	0.28	0.23	0.23
Kefalotyri	0.58	0.51	0.47	0.39	0.39
Pecorino-Romano	0.52	0.46	0.38	0.28	0.28

**Aid rates school milk per school year (€/ 100 kg)**

Category	Description	2004/2005	2005/2006
I	Whole milk/yoghurt	€1.69	€20.16
II	Milk, > 3% fat	€20.39	€18.95
III	Milk, > 2,5% fat	€19.08	€17.76
IV	Milk, > 2% fat	€17.78	€16.57
V	Semi skimmed milk, >1,5% fat	€16.47	€15.39
VI	Milk, >1% fat	€15.17	€14.17
VII	Skimmed Milk, <1,5% fat	€12.56	€11.78
VIII	Fresh cheese and processed cheese >40 % fat in dm	€5.07	€3.48
IX	Other cheese >45%fat in dm	€165.93	€161.87
X	Grana Padano	€184.37	€179.86
XI	Parmigiano Reggiano	€202.80	€197.85
XII	Halloumi	€162,68	€158.70

3. BUTTER - TABLES AND GRAPHS

Intervention butter balance sheet



Tonnes

Member State	STOCK at 01/01/2005	IN 01/01/05 - 31/12/05	OUT						STOCK on 31/12/2005	
			Pastry and Icecream R.2571/97		Most Deprived persons R.3149/92	R.2771/99 All purposes	Refused quantities	Without Specification		TOTAL
			A	B						
Belgium	260				260				260	0
Czech Republic		796						1	1	795
Denmark										
Germany	3 642		46		3 584				3 630	12
Estonia		1 005						1	1	1 004
Greece										
Spain	50 444	7 997	6 585		16 118	505		378	23 586	34 855
France	5 194		2 604			978		44	3 626	1 568
Ireland	71 113	18 127	13 301	225		8 599	523		22 648	66 592
Italy	8 575	5 502			7 875				7 875	6 202
Cyprus										
Latvia		497					150	0	150	348
Lithuania										
Luxembourg										
Hungary										
Malta										
Netherlands	0									0
Austria										
Poland		1 510					444		444	1 066
Portugal	12 222	919	1 919		2 594				4 513	8 628
Slovenia										
Slovakia		40								40
Finland	3 188				3 188				3 188	0
Sweden										
United Kingdom	5 768		4 162	256		1 228			5 646	122
EU 25	160 407	36 393	28 617	481	33 619	11 310	1 117	423	75 568	121 233
EU 15	160 407	32 545	28 617	481	33 619	11 310	523	422	74 973	117 979
NMS 10		3 848					594	1	595	3 253

Report on the intervention measures in the dairy sector 2005

**MONTHLY EVOLUTION OF BUTTER STOCKS IN 2005**

In Tons

	Jan	Feb	Mar	Apr	May	Jun	Jul	Aug	Sep	Oct	Nov	Dec	Year
<b>Public Stock</b>													
Beginning of Month	160 408	151 800	126 048	129 981	136 988	141 629	144 613	143 726	137 470	133 333	128 661	124 813	160 408
In	0	0	7 000	10 975	8 124	6 312	3 202	473	307	0	0	0	36 393
Out	8 607	25 753	3 067	3 967	3 484	3 328	4 089	6 729	4 443	4 672	3 848	3 580	75 567
End of Month	151 800	126 048	129 981	136 988	141 629	144 613	143 726	137 470	133 333	128 661	124 813	121 233	121 233
<b>Private Storage</b>													
Beginning of Month	43 119	25 308	15 278	32 646	54 705	85 329	110 570	131 760	138 433	116 656	91 857	67 241	43 119
In	0	0	29 011	22 552	30 913	25 565	21 496	14 704	2 203	307	0	0	146 751
Out	17 812	10 030	11 643	493	289	324	306	8 031	23 980	25 106	24 616	23 385	146 015
End of Month	25 308	15 278	32 646	54 705	85 329	110 570	131 760	138 433	116 656	91 857	67 241	43 855	43 855
<b>Total Stock</b>													
End of Month	177 108	141 326	162 627	191 693	226 958	255 183	275 486	275 903	249 989	220 518	192 054	165 089	165 089

Report on the intervention measures in the dairy sector 2005

**AIDED DISPOSAL OF BUTTER**

**Tonnes of Butter Equivalent**

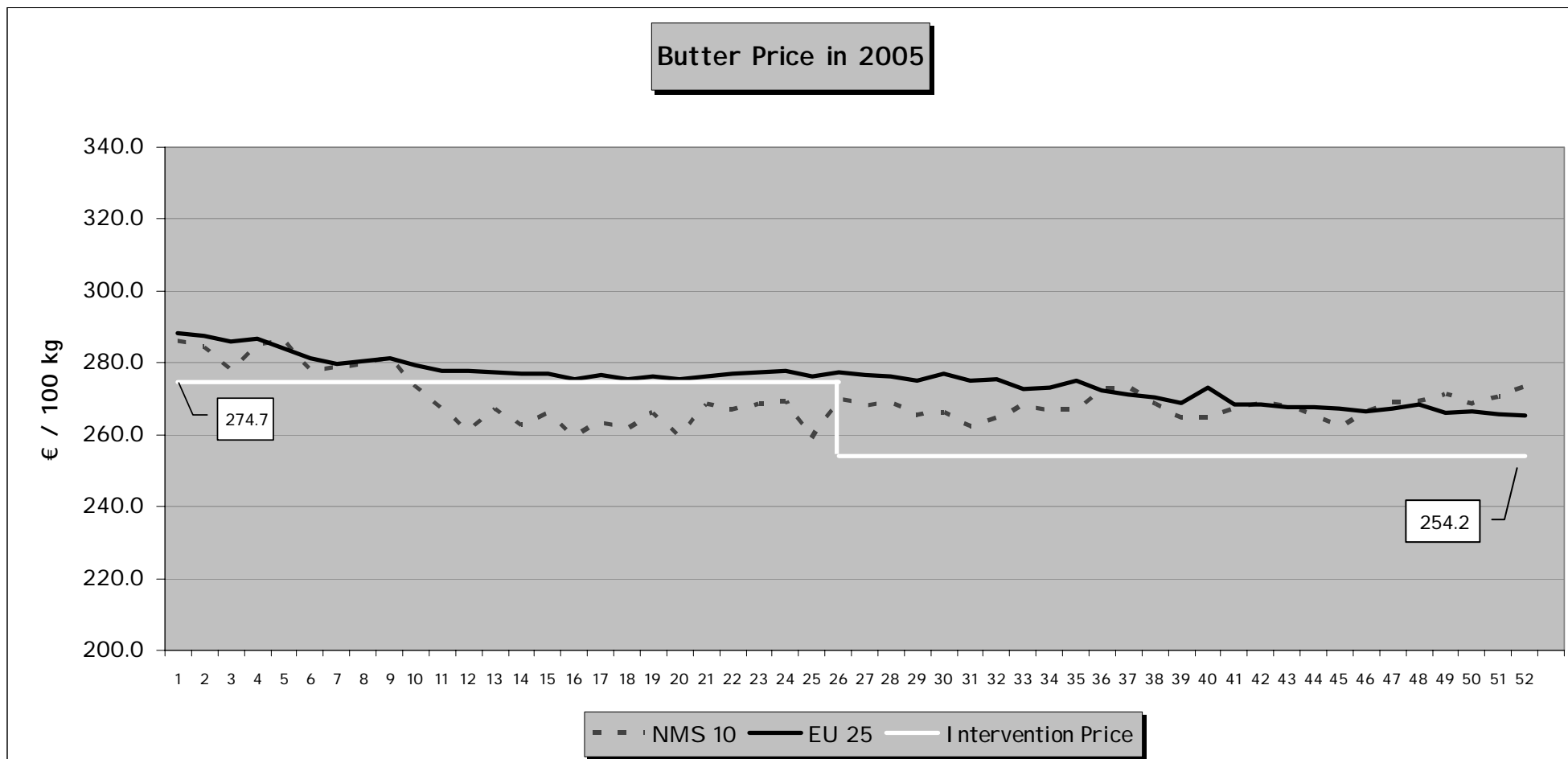
Measure	Regulation nr	2001			2002			2003			2004			2005		
		TOTAL	interv.	market	TOTAL	interv.	market	TOTAL	interv.	market	TOTAL	interv.	market	TOTAL	interv.	market
Pastry		399 597	2 468	397 129	393 169	0	393 169	408 383	5 059	403 324	410 931	20 860	390 070	402 701	28 617	374 084
Ice cream		76 493	0	76 493	71 474	0	71 474	81 917	100	81 817	79 351	390	78 961	76 667	481	76 186
<b>TOTAL</b>	<i>2571/97</i>	<b>476 090</b>	<b>2 468</b>	<b>473 622</b>	<b>464 643</b>	<b>0</b>	<b>464 643</b>	<b>490 300</b>	<b>5 159</b>	<b>485 141</b>	<b>490 282</b>	<b>21 251</b>	<b>469 031</b>	<b>479 368</b>	<b>29 098</b>	<b>450 269</b>
Non-profitm. organ.	<i>2191/81</i>	29 136	0	29 136	27 365	0	27 365	26 756	0	26 756	24 270	0	24 270	24 128	0	24 128
Concentrated butter	<i>429/90</i>	13 549	0	13 549	13 752	0	13 752	14 337	0	14 337	15 030	0	15 030	15 498	0	15 498
Deprived persons	<i>3149/92</i>	32 135	32 135	0	27 111	27 111	0	3 192	3 192	0	26 853	26 853	0	33 739	33 739	0
Free sales	<i>2771/99</i>	540	540	0	0	0	0	0	0	0	43 995	43 995		11 310	11 310	
<b>TOTAL</b>		<b>551 450</b>	35 143	516 307	<b>532 871</b>	27 111	505 760	<b>534 585</b>	8 351	526 234	<b>600 431</b>	92 100	508 331	<b>564 043</b>	74 148	489 896

## Sales of Market Butter by Member State



2005

Member State	Reg. 2571/97		Reg. 429/90 Conc. Butter (butter equiv.)	Reg. 2191/81 Non-Profit	TOTAL
	Pastry A	Icecream B			
Belgium	51 902	11 365	569	368	64 204
Czech Republic	40	173	0	38	250
Denmark	50	1 569	0	188	1 808
Germany	61 973	17 249	9 516	11 365	100 103
Estonia	45	328	0	0	373
Greece	407	1 261	342	0	2 009
Spain	7 248	3 163	0	0	10 411
France	147 423	15 321	0	8 075	170 819
Ireland	301	548	0	223	1 071
Italy	2 692	3 584	864	22	7 162
Cyprus	0	0	0	0	0
Latvia	270	38	0	0	308
Lithuania	345	323	0	0	668
Luxembourg	157	43	0	93	293
Hungary	10	0	0	0	10
Malta	0	0	0	0	0
Netherlands	49 221	12 768	0	104	62 092
Austria	841	337	601	465	2 244
Poland	65	14	0	64	143
Portugal	0	0	0	1 113	1 113
Slovenia	0	0	0	0	0
Slovakia	0	0	0	0	0
Finland	1 400	2 271	0	0	3 671
Sweden	738	1 826	0	0	2 564
United Kingdom	48 956	4 006	3 608	2 009	58 579
EU 25	374 084	76 186	15 498	24 128	489 896
EU 15	373 309	75 310	15 498	24 026	488 143
NMS 10	775	876	0	102	1 753



4. SKIMMED MILK POWDERS - TABLES AND GRAPHS

# Intervention Skimmed Milk Powder Balance Sheet



Member State	STOCK at 01/01/2005	IN 01/01/05 - 31/12/05	OUT					STOCK on 31/12/2005
			Most Deprived persons Reg. 3149/95	Animal Feed Reg 2799/99	Tender Reg.214/2001	Refused quantities	Without Specification	
Belgium	412		412					412
Czech Republic		820			820			820
Denmark								
Germany	1 879	1 090		590	2 379			2 969
Estonia								
Greece								
Spain	484				484			484
France	0							0
Ireland	40 208	3 345	23 980	3 877	14 101		3	41 961
Italy								
Cyprus								
Latvia								
Lithuania								
Luxembourg								
Hungary								
Malta								
Netherlands	0							0
Austria	0							0
Poland								
Portugal	480		480					480
Slovenia								
Slovakia								
Finland	2							2
Sweden	1 982		500		1 475			1 975
United Kingdom	17 343			2 677	8 428	40	175	11 320
EU 25	62 789	5 255	25 372	7 144	27 687	40	179	60 421
EU 15	62 789	4 435	25 372	7 144	26 867	40	179	59 601
NMS 10		820			820			820

Report on the intervention measures in the dairy sector 2005

**EVOLUTION OF SMP STOCKS IN 2005**

In Tons

	Jan	Feb	Mar	Apr	May	Jun	Jul	Aug	Sep	Oct	Nov	Dec	Year
<b>Public Stock</b>													
Beginning of Month	62 789	57 679	46 580	42 073	43 310	32 379	20 430	16 502	14 406	12 075	8 654	7 750	62 789
In	0	0	1 230	1 479	2 347	198	0	0	0	0	0	0	5 255
Out	5 110	11 099	5 738	242	13 278	12 148	3 928	2 096	2 331	3 421	904	126	60 421
End of Month	57 679	46 580	42 073	43 310	32 379	20 430	16 502	14 406	12 075	8 654	7 750	7 624	7 624

**QUANTITIES OF SKIMMED MILK FOR WHICH AN AID HAS BEEN REQUESTED SINCE 2001**

Year	Powder (1) Animal feed	Caseine /Caseinate	Total
2001	3 696	5 829	9 525
2002	4 802	4 922	9 723
2003	4 688	5 447	10 135
2004	4 549	5 949	10 498
2005	3 984	5 952	9 937

(1) : Conversion factor: 11.0

**Regulation (EC) N° 2799/1999 : Skimmed Milk Powder used as Feed**  
**Aid requested in 2004 and 2005**

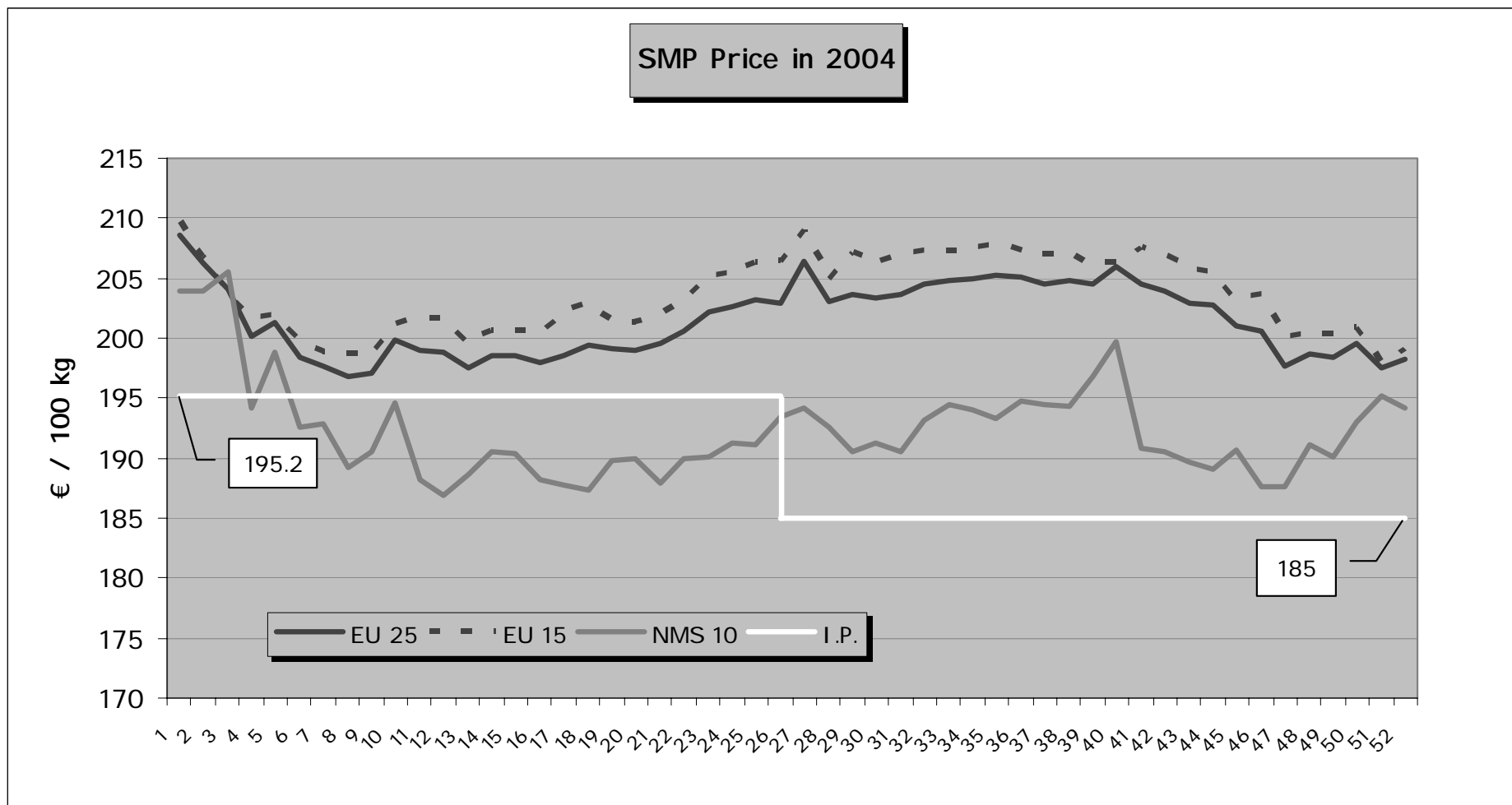
Quantities in Tons of Skimmed-Milk Powder

	Denatured		Processed into Compound Feed		Total		Change 2004/2005
	2004	2005	2004	2005	2004	2005	
BELGIUM			10 647	8 008	10 647	8 008	-24.8%
CEZCH REPUBLIC							
DENMARK							
GERMANY	10		37 301	35 243	37 311	35 243	-5.5%
ESTONIA							
GREECE							
SPAIN			866	879	866	879	1.5%
FRANCE			156 848	140 942	156 848	140 942	-10.1%
IRELAND			3 451	875	3 451	875	-74.6%
ITALY			65 197	45 167	65 197	45 167	-30.7%
CYPRUS							
LATVIA							
LITHUANIA							
LUXEMBOURG							
HUNGARY							
MALTA							
NETHERLANDS	27		133 898	125 888	133 925	125 888	-6.0%
AUSTRIA							
POLAND							
PORTUGAL							
SLOVENIA							
SLOVAKIA							
FINLAND			2 535	2 321	2 535	2 321	-8.4%
SWEDEN			383	412	383	412	7.3%
UNITED KINGDOM	1 453	1 390	928	1 020	2 381	2 410	1.2%
<b>TOTAL EU 25</b>	<b>1 490</b>	<b>1 390</b>	<b>412 055</b>	<b>360 754</b>	<b>413 545</b>	<b>362 144</b>	<b>-12.4%</b>
<i>TOTAL EU 15</i>	<i>1 490</i>	<i>1 390</i>	<i>412 055</i>	<i>360 754</i>	<i>413 545</i>	<i>362 144</i>	<i>-12.4%</i>
<i>TOTAL NMS 10</i>							

**Regulation (EC) N° 2921/1990 : Skimmed Milk processed into Casein/Caseinates**  
**Quantities for which an Aid was requested in 2004 and 2005**

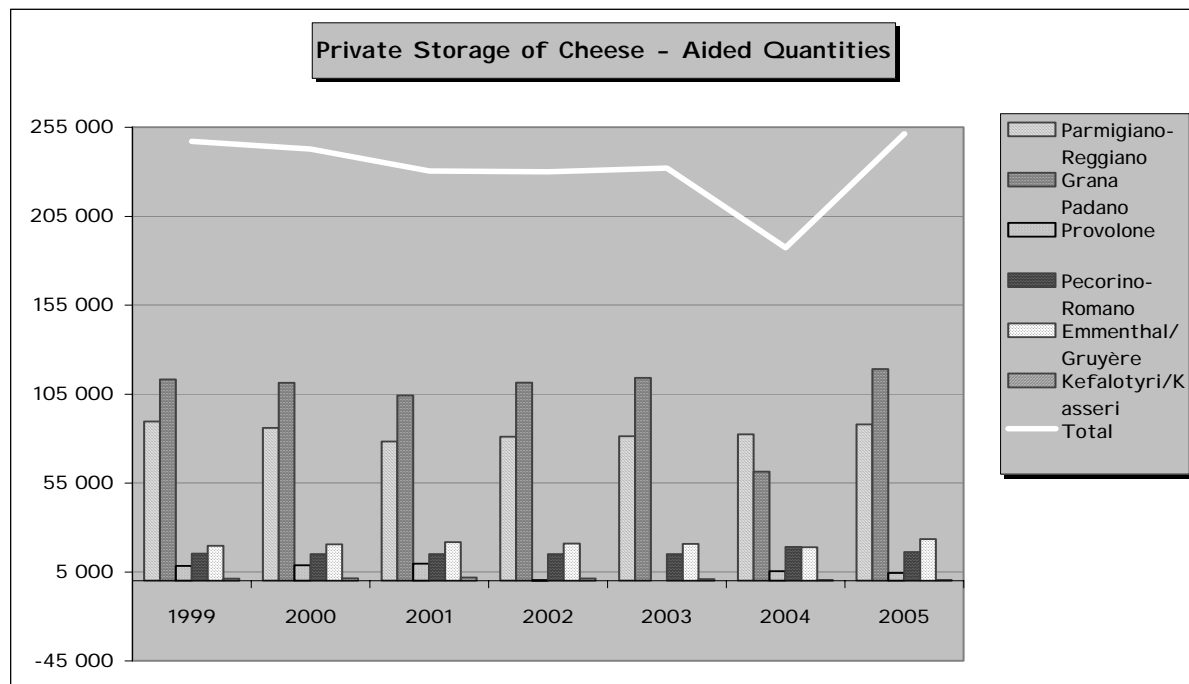
Tons of Skimmed Milk Subsidised

	Acid Casein		Rennet Casein		Caseinates		Total		Change 2004/2005
	2004	2005	2004	2005	2004	2005	2004	2005	
BELGIUM									
CEZCH REPUBLIC									
DENMARK	36 420	20 607			477 689	483 383	514 109	503 990	-2.0%
GERMANY	358 726	375 721	14 134	19 888	98 244	85 686	471 104	481 295	2.2%
ESTONIA									
GREECE									
SPAIN									
FRANCE	320 650	336 045	813 899	955 478	495 088	492 684	1 629 637	1 784 207	9.5%
IRELAND	788 458	753 868	998 551	1 044 044	2 342		1 789 351	1 797 912	0.5%
ITALY									
CYPRUS									
LATVIA									
LITHUANIA	26 197	21 024					26 197	21 024	-19.7%
LUXEMBOURG									
HUNGARY			1 105		3 026	148	4 131	148	-96.4%
MALTA									
NETHERLANDS					1 328 607	1 221 676	1 328 607	1 221 676	-8.0%
AUSTRIA									
POLAND									
PORTUGAL									
SLOVENIA									
SLOVAKIA									
FINLAND									
SWEDEN									
UNITED KINGDOM	186 322	141 832					186 322	141 832	-23.9%
<b>TOTAL EU 25</b>	<b>1 716 773</b>	<b>1 649 097</b>	<b>1 827 688</b>	<b>2 019 410</b>	<b>2 404 996</b>	<b>2 283 577</b>	<b>5 949 457</b>	<b>5 952 084</b>	<b>0.0%</b>
<i>TOTAL EU 15</i>	<i>1 690 575</i>	<i>1 628 073</i>	<i>1 826 584</i>	<i>2 019 410</i>	<i>2 401 970</i>	<i>2 283 429</i>	<i>5 919 129</i>	<i>5 930 913</i>	<i>0.2%</i>
<i>TOTAL NMS 10</i>	<i>26 197</i>	<i>21 024</i>	<i>1 105</i>		<i>3 026</i>	<i>148</i>	<i>30 328</i>	<i>21 172</i>	<i>-30.2%</i>



**5. PRIVATE STORAGE AID CHEESES – QUANTITIES SUBSIDISED.**

Tonnes	1999	2000	2001	2002	2003	2004	2005
<b>Parmigiano-Reggiano</b>	89 541	85 876	78 301	81 052	81 234	82 353	87 870
<b>Grana Padano</b>	113 181	111 333	104 126	111 380	114 110	61 354	119 021
<b>Provolone</b>	8 331	8 679	9 535	223	57	5 317	4 400
<b>Pecorino-Romano</b>	15 254	15 000	15 000	15 000	15 000	19 000	16 205
<b>Emmenthal/Gruyère</b>	19 632	20 454	21 701	21 040	20 780	18 905	23 425
<b>Kefalotyri/Kasseri</b>	1 211	1 445	1 778	1 353	871	403	423
<b>Total</b>	<b>247 150</b>	<b>242 787</b>	<b>230 441</b>	<b>230 048</b>	<b>232 052</b>	<b>187 332</b>	<b>251 344</b>



# Report on the intervention measures in the dairy sector 2005

## 6. SCHOOL MILK: QUANTITIES SUBSIDISED DURING THE 2004/205 SCHOOL YEAR

Product weight (in Tons)

*ex cat III*

Member State	CAT I (Whole Milk)	CAT II (3%)	CAT III (2,5%)	CAT IV (2,5%)	CAT V (Semi skimmed)	CAT VI (1%)	CAT VII	CAT VIII (fresh & processed)	CAT IX (other cheeses)	CAT X (Grana Padano)	CAT XI (Parmegiano)	CAT XII (Halloumi)	Total quantity (t)	Whole Milk Equivalent (t)	Expenditure Mio Euro
BELGIUM	1886	0	0	0	3425	0	69	0	0	0	0	0	5380	5380	1.0
CZECH REPUBLIC	281	0	0	0	3985	0	0	0	0	0	0	0	4266	4266	0.72
DENMARK	1055	0	0	0	7325	0	7692	14	83	0	0	0	16169	16748	2.0
GERMANY	44438	0	0	0	1412	0	0	0	0	0	0	0	45850	45850	10.1
ESTONIA	105	0	1212	0	47	0	0	0	0	0	0	0	1364	1364	0.51
GREECE	0	0	0	0	0	0	0	0	0	0	0	0	0	0	0.00
SPAIN	3555	0	0	0	160	0	18	11	391	0	0	0	4136	6878	2.2
FRANCE	10539	0	0	0	9110	0	1852	3927	4491	0	0	0	29919	67637	13.9
IRELAND	3685	0	0	0	0	0	0	5	0	0	0	0	3690	3729	1.05
ITALY	461	0	0	0	194	0	0	451	355	164	220	0	1845	7271	1.75
CYPRUS	0	0	0	0	0	0	0	0	0	0	0	0	0	0	0.0
LATVIA	3	0	5	1	17	0	0	0	0	0	0	0	26	26	
LITHUANIA	9	0.2	8	0	0	0	0	0.1	0.1	0	0	0	17.2	19	
LUXEMBOURG	155	0	0	0	0	0	0	0	0	0	0	0	155	155	0.034
HUNGARY	22	0	13978	0	441	0	0	14	0	0	0	0	14455	14493	1.9
MALTA	0	0	0	0	0	0	0	0	0	0	0	0	0	0	0.0
NETHERLANDS	1807	0	0	0	4432	0	0	0	0	0	0	0	6239	6239	1.1
AUSTRIA	3995	0	0	0	72	0	0	0	0	0	0	0	4067	4067	0.8
POLAND	747	1788	276	4898	2488	34	0	0	0	0	0	0	10231	10231	1.6
PORTUGAL	0	0	0	0	6778	0	0	0	0	0	0	0	6778	6778	1.3
SLOVENIA	0.3	0	0	0	0	0	0	0	0	0	0	0	0.3	0.3	
SLOVAKIA	36	0	0	0	105	0	0	0	0	0	0	0	141	141	0.025
FINLAND	590	0	0	0	9402	3015	9747	71	189	0	0	0	23014	24414	3.8
SWEDEN	155	12035	31923	0	3756	0	0	0	746	0	0	0	48615		9.46
UNITED KINGDOM	43375	0	0	0	3785	0	0	0	0	0	0	0	47160	47160	9.8
<b>TOTAL EU 25</b>	<b>116 922</b>	<b>13 823</b>	<b>61 380</b>	<b>4 899</b>	<b>57 375</b>	<b>3 049</b>	<b>19 378</b>	<b>4 508</b>	<b>6 255</b>	<b>164</b>	<b>220</b>	<b>0</b>	<b>287 972</b>	<b>287 340</b>	<b>64.9</b>
<b>TOTAL EU 15</b>	<b>115 719</b>	<b>12 035</b>	<b>45 901</b>	<b>0</b>	<b>50 293</b>	<b>3 015</b>	<b>19 378</b>	<b>4 493</b>	<b>6 255</b>	<b>164</b>	<b>220</b>	<b>0</b>	<b>257 473</b>	<b>256 799</b>	<b>60.2</b>
<b>TOTAL NMS 10</b>	<b>1203</b>	<b>1788</b>	<b>15479</b>	<b>4899</b>	<b>7083</b>	<b>34</b>	<b>0</b>	<b>14</b>	<b>0</b>	<b>0</b>	<b>0</b>	<b>0</b>	<b>30499</b>	<b>30540</b>	<b>4.8</b>